



INSTALLATION GUIDE

CTS TURBO BMW F2X/F3X N55 TURBO INLET PIPE
CTS-HW-455



WHAT IS INCLUDED

1. CTS Turbo Inlet Pipe



NOTES

Vehicle used in this guide is a 2016 BMW M2.

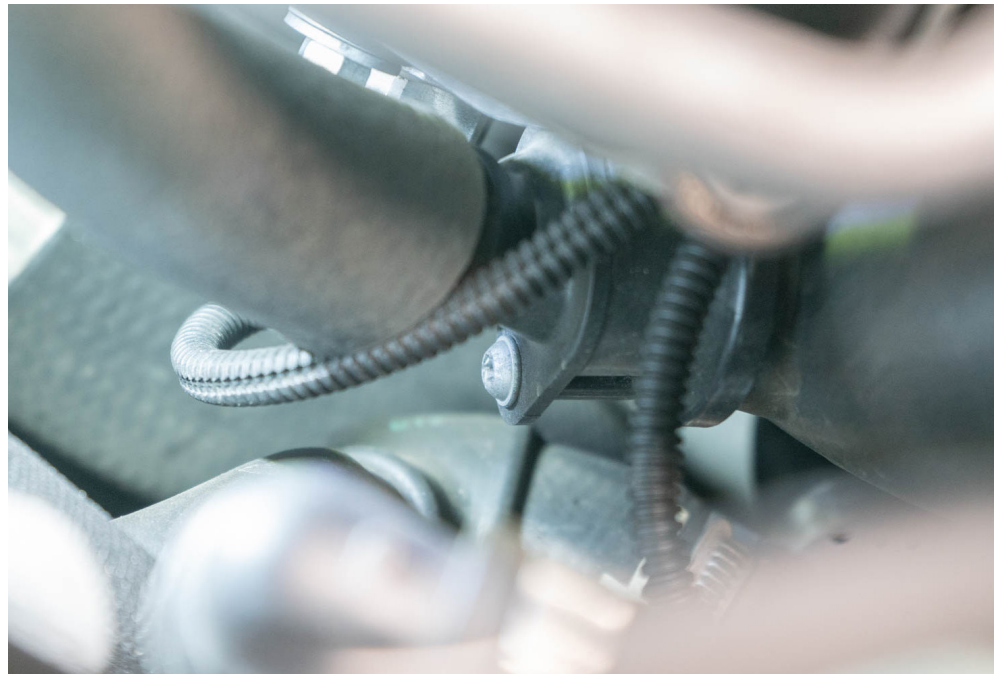
Always make sure the car is safe to work on. Do not work on a hot motor.

STEP 1

Remove intake pipe

**STEP 2**

Remove the torx screw which
secures the crankcase vent
tube to the turbo inlet pipe



STEP 3

Now remove crankcase vent tube from the top side and remove the line.



STEP 4

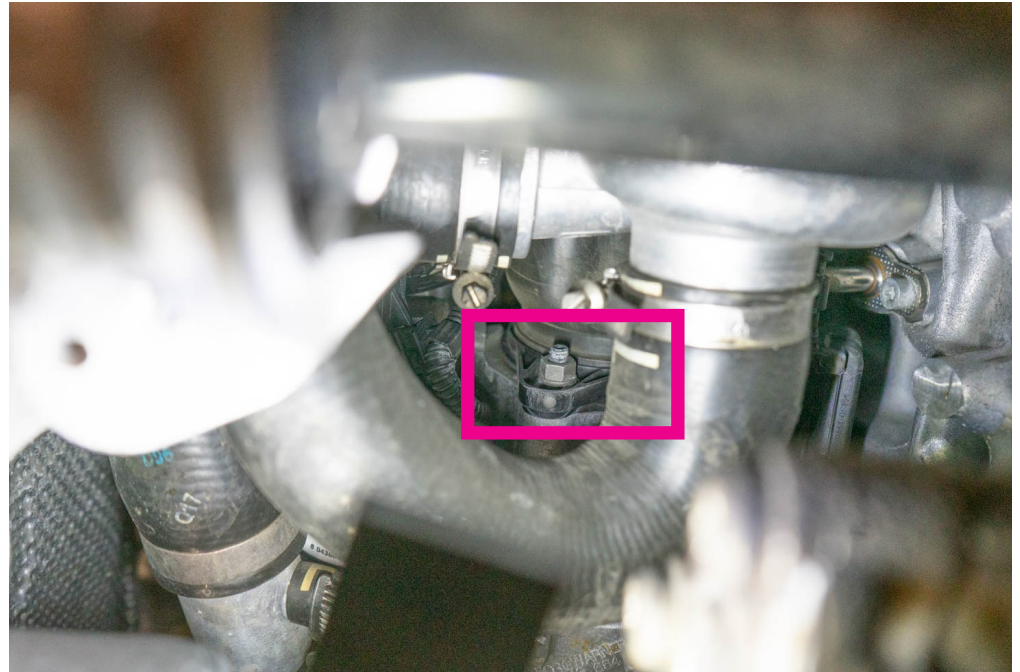
Remove the undertray. This helps for easy access

You could choose not to do this and complete from the top side



STEP 5

Remove the nut indicated

**STEP 6**

On the top side remove the E-torx bolt securing the turbo inlet pipe



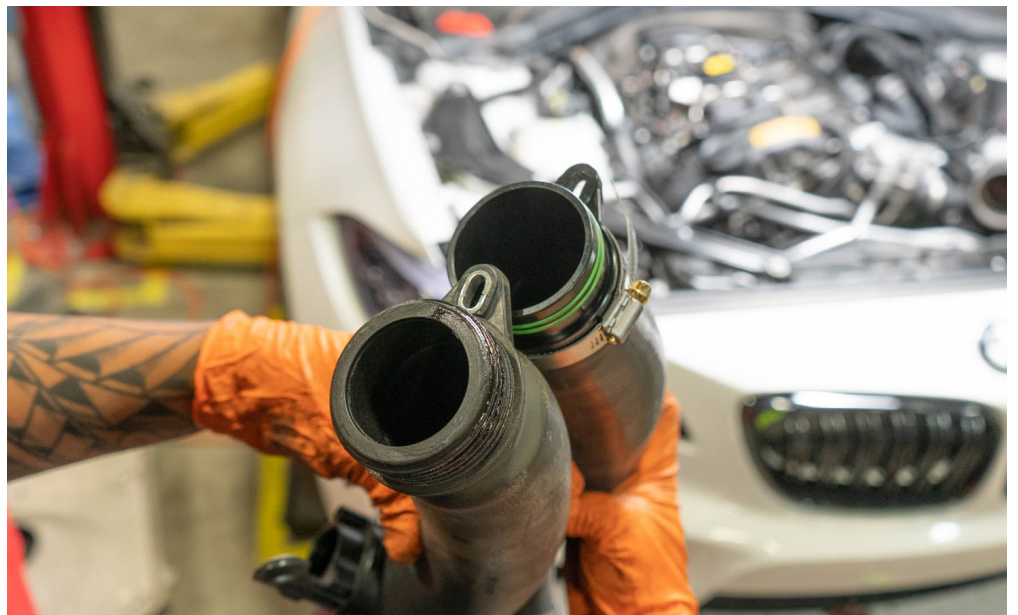
STEP 7

Remove



STEP 8

Stock vs CTS



STEP 9

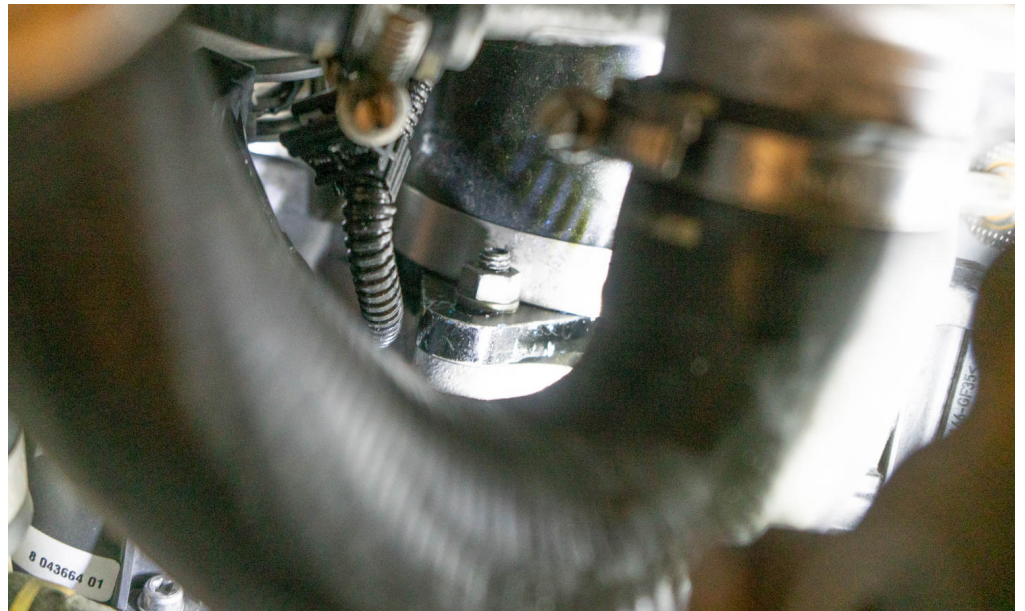
Install from the top side



STEP 10

Ensure the billet adapter sits flush and reinstall the OEM nut.

At this time reinstall the crank-case vent tube. Use the provided allen bolt to secure to the turbo inlet pipe.



STEP 11

Reinstall the intake pipe and undertray.

You are done!

