



## INSTALLATION GUIDE

CTS Turbo 8V RS3 Intake  
CTS-IT-255R



20630 Mufford Crescent, Unit #309  
Langley, British Columbia V2Y 2V9

[www.CTSTURBO.com](http://www.CTSTURBO.com)

## WHAT IS INCLUDED

1. Heatshield
2. Intake Pipe
3. Air Filter
4. Silicone Couplers
5. Hose Clamps & Hardware



## TOOLS REQUIRED

1. T25 Torx
2. 7mm, 8mm Sockets
3. Pliers (for OE hose clamps)
4. 2.5mm Allen key

## NOTES

Vehicle used in this guide is a 2018 Audi RS3. Always make sure the car is safe to work on. Do not work on a hot motor. We do not accept any liability for incorrect installation or damage during the install.

**STEP 1**

Using the supplied hardware assemble the airbox and install the weather stripping.



## STEP 2

Remove the engine cover



## STEP 3

Remove the constant tension clamp on the passenger side (slide it back)

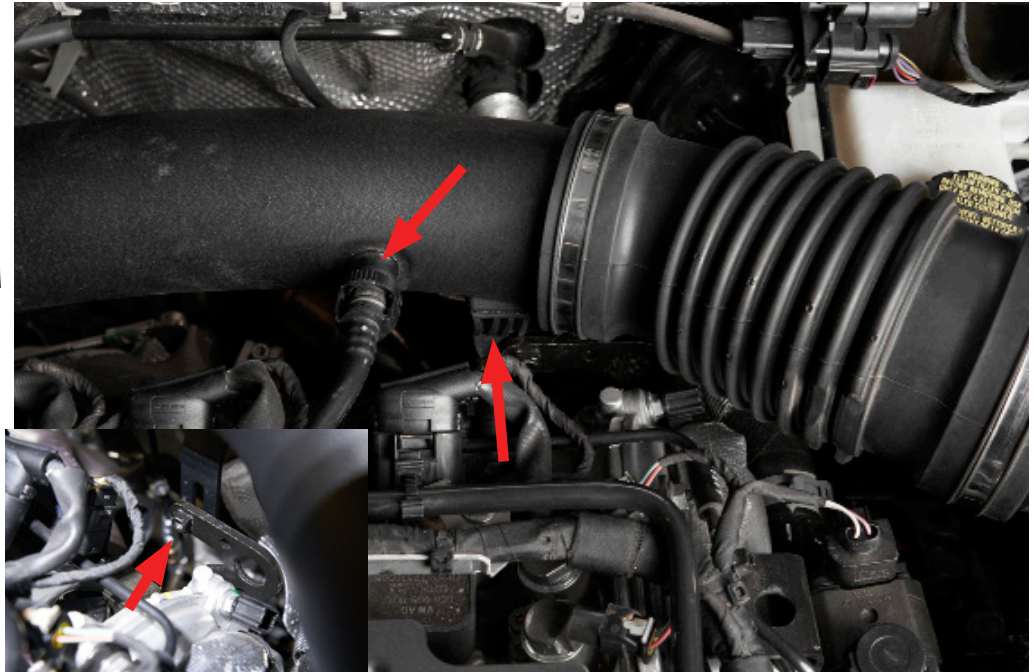
Loosen the Hose clamp on the drivers side (7mm)



## STEP 4

Disconnect the connection in the OEM pipe

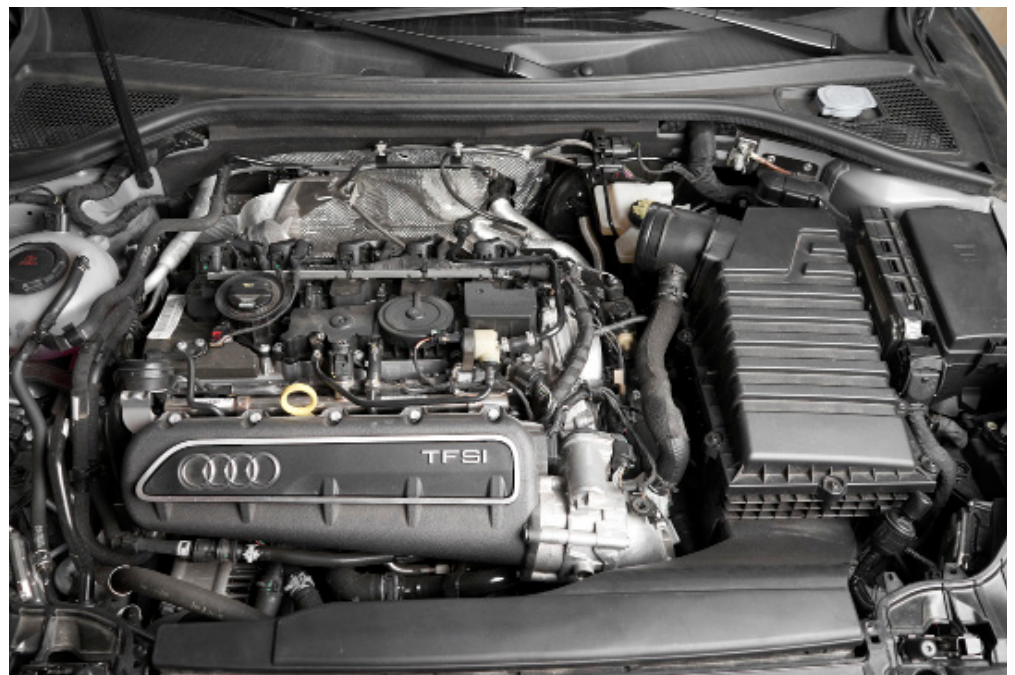
Remove the T-25 Torx in the bracket behind/under the OEM pipe



## STEP 5

Remove the OEM pipe

Loosely Re-Install the T-25 torx back into the bracket you just removed



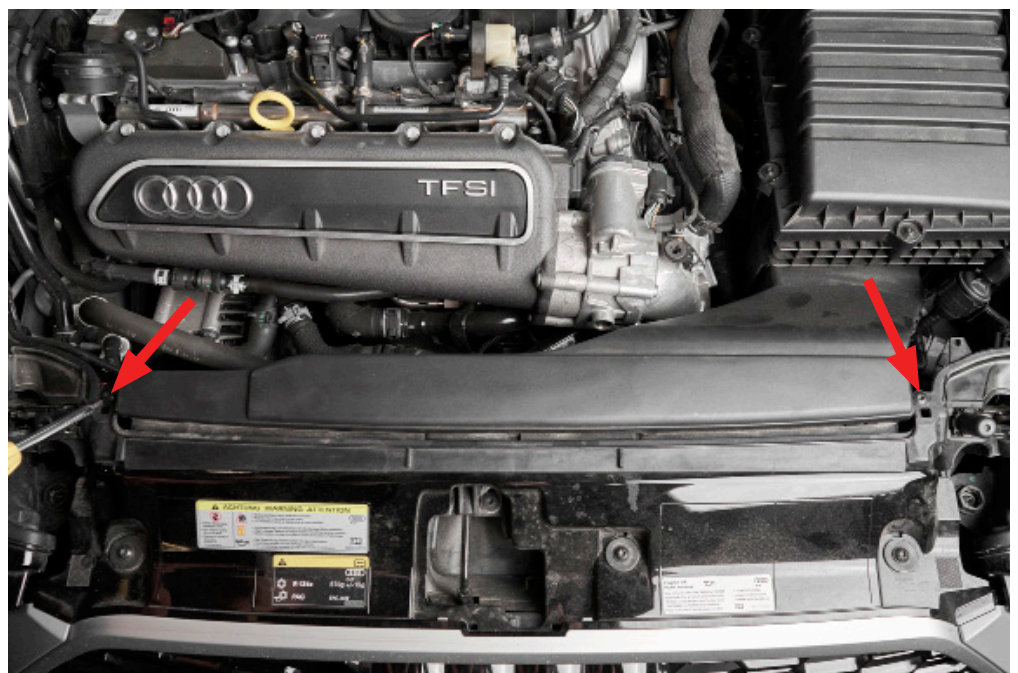
## STEP 6

Release the constant tension clamp on the connection shown, remove hose from the airbox



## STEP 7

Remove the two T25 from the front air-scoop



## STEP 8

Disconnect the sensor that is clipped to the airbox



## STEP 9

Remove Airbox

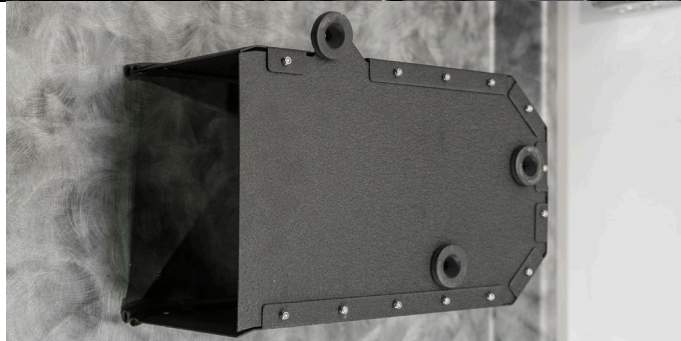
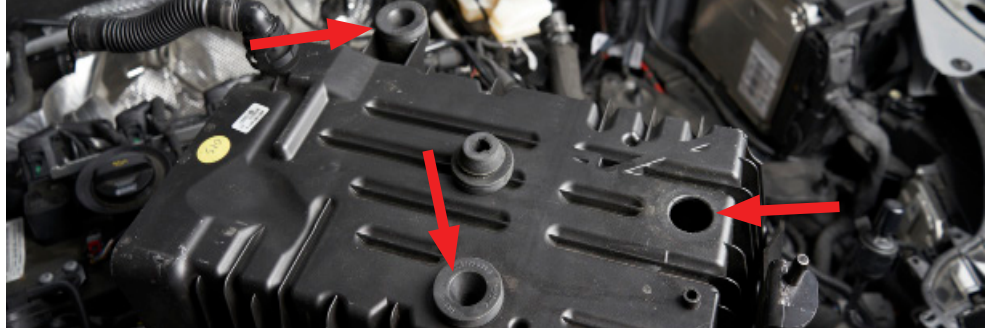
\*\*Pull up on each corner, there are three rubber grommets that hold the entire assembly to the base



## STEP 10

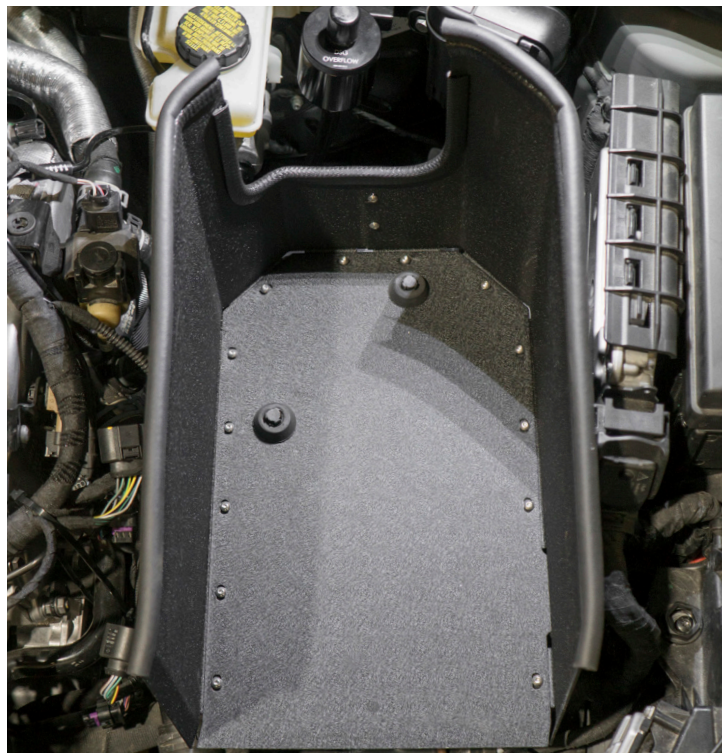
Transfer the grommets from the OEM airbox to the CTS Airbox

\*\*when installing the grommets, a tiny bit of WD-40 helps immensely.



## STEP 11

Install the CTS Airbox





## STEP 12

Install the reducer silicon coupler on the turbo inlet.  
Install lower hose clamp on the turbo inlet.

\*\*A little bit of WD-40 on the silicone couplers will greatly help the install



## STEP 13

Install the intake pipe, filter and silicone coupler together.

Install the brass barb fitting for the for the EVAP breather.



## STEP 14

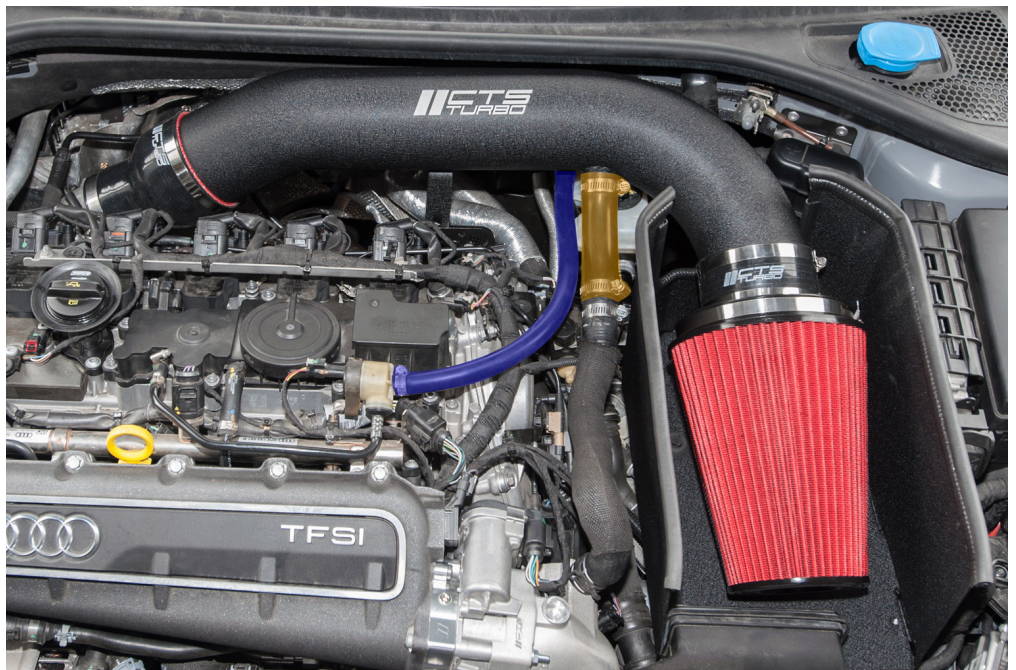
Re-install the front air-duct



## STEP 15

Install the intake pipe along with the filter.

Connect both the EVAP and diverter silicone hoses .



**STEP 16**

Make sure to install and tighten the T25 bolt to the intake bracket and mount

**STEP 17**

Check to see all connetions are tight and install Engine Cover

Done!

