



PERFORMANCE EXHAUST INSTALLATION INSTRUCTIONS

PART NUMBER: D660-0079 or D660-0079-BLK

APPLICATION: 2019 BMW F90 M5

Congratulations for being selective enough to use a Dinan Performance Exhaust. We have spent many hours developing this kit to assure that you will receive maximum performance and durability with minimum difficulty in installation. Please take the time to read these instructions and call us if you have any difficulties during the installation.

Please take the time to read these instructions thoroughly before proceeding. When performing the installation, read the entire numbered instruction before working on the car. If you feel that you do not have the requisite skill, please arrange for a qualified repair facility to perform the installation.

If you have any difficulties during the installation, or if these instructions are not clear to you, please call Dinan's Technical Support Staff at (800) 341-5480.

Note: If the car has been driven recently, it's best to let the exhaust cool down for approximately 10 minutes to avoid possible burns while installing the Dinan muffler.

PARTS LIST

Qty	Part #	Description
1	D663-0345	MUFFLER ASSY; F90 M5
1	D663-0346	HARDWARE KIT F90 M5
4	D663-0573	EXHAUST TIP; ENGRAVED
	- OR -	
4	D663-0574	EXHAUST TIP BLK; ENGRAVED

PRE-INSTALLATION

1. Remove the exhaust shield and place it to the side. There are nine 8mm bolts and two 10mm bolts that must be removed. See Figure 1.

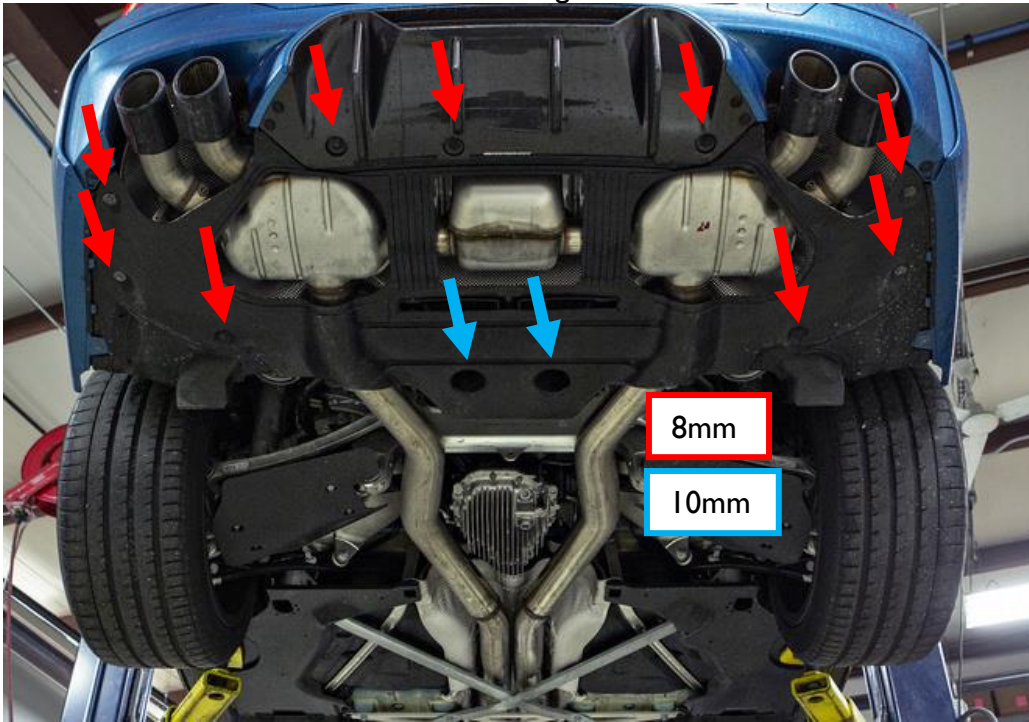


Figure 1

2. Mark the cut points. This location is critical – carefully read thru and understand the next few steps before making your cut. Measure and mark a point from the edge of the muffler weld (“Point A”) that is 11-3/4” away, at the center of the pipe (“Point B”) as shown in Figures 2-4.

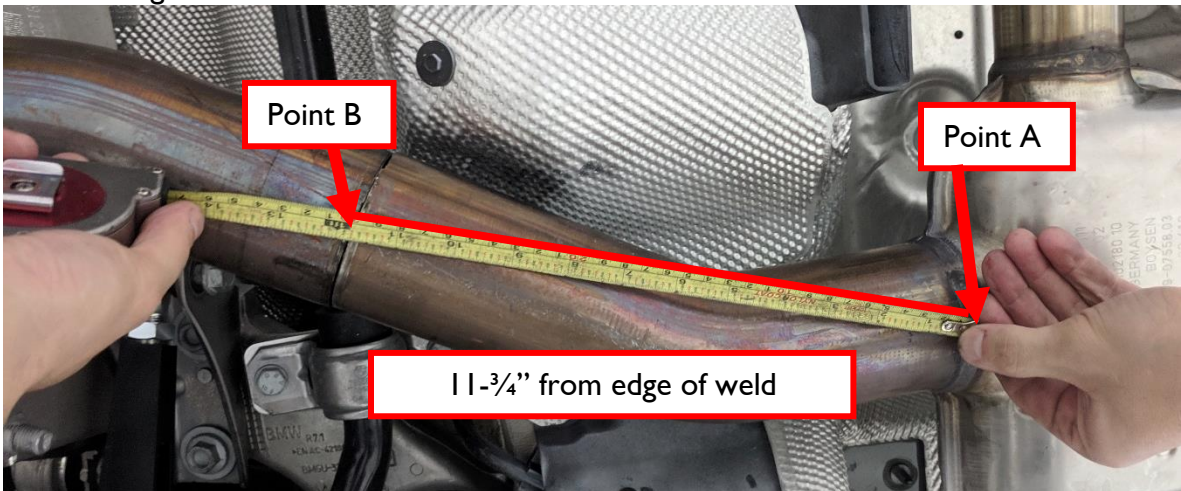


Figure 2

2.1 The center of the pipe on Point A should resemble Figure 3 below.

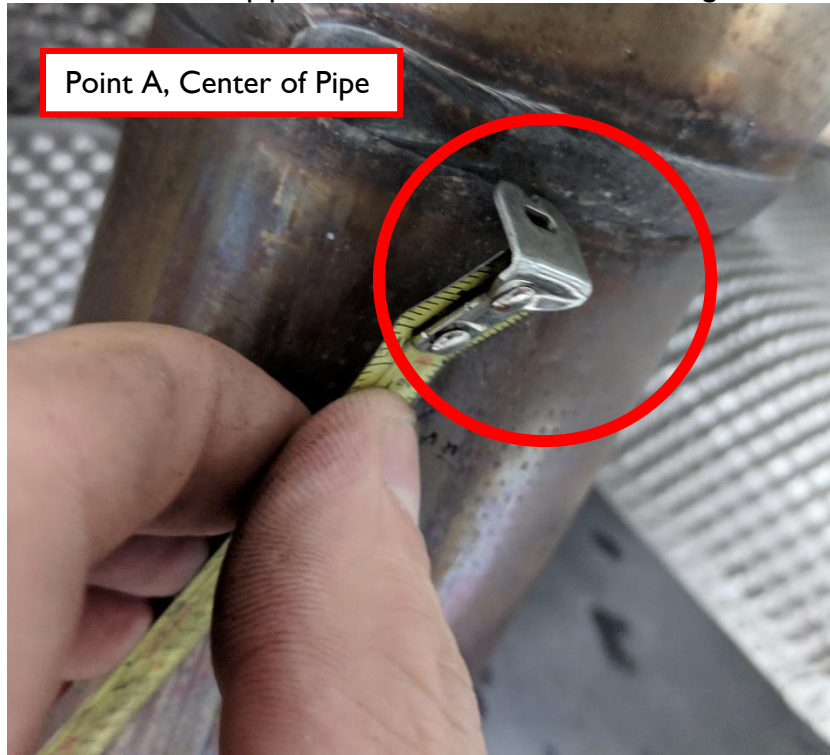


Figure 3

2.2 The center of the pipe on Point B should resemble Figure 4 as shown below, with the tape measure marking the point at exactly $11\text{-}\frac{3}{4}$ ".

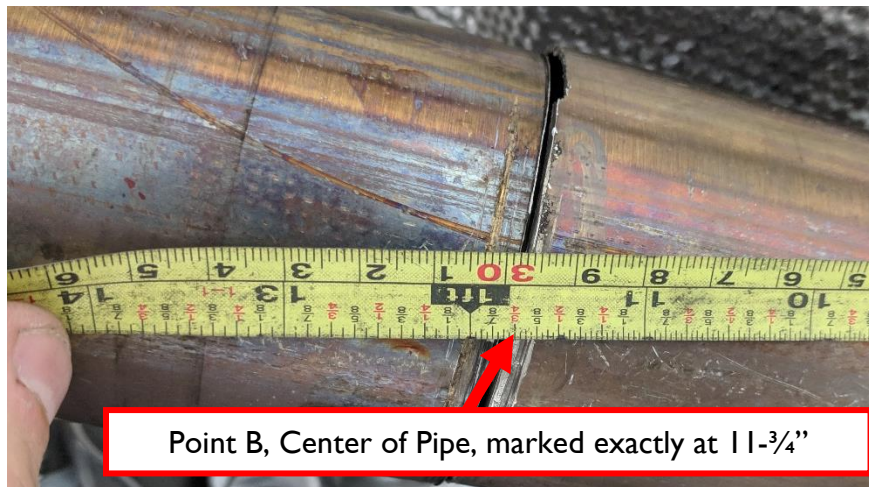


Figure 4

3. Cut the two pipes at your marks.

4. Support the exhaust, unplug the exhaust valve actuators (not attached in photo) and remove the exhaust hangers. The exhaust hangers are two 13mm bolts. See Figure 5.

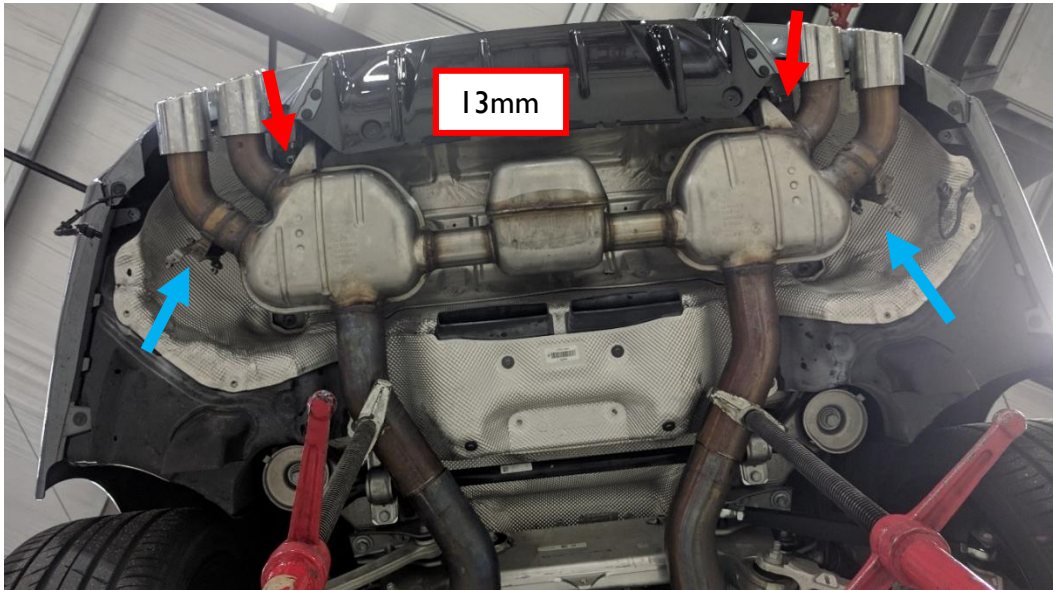


Figure 5

5. Remove stock exhaust from car, and remove the exhaust valve actuators, mounting plates, and rubber hangers from the stock exhaust. These items will be reused on the Dinan exhaust.

ASSEMBLY AND INSTALLATION

1. Using the exhaust hangers from the stock exhaust and the provided 12mm nuts, install the hangers to the hanger mounts of the Dinan Exhaust. See Figure 6.

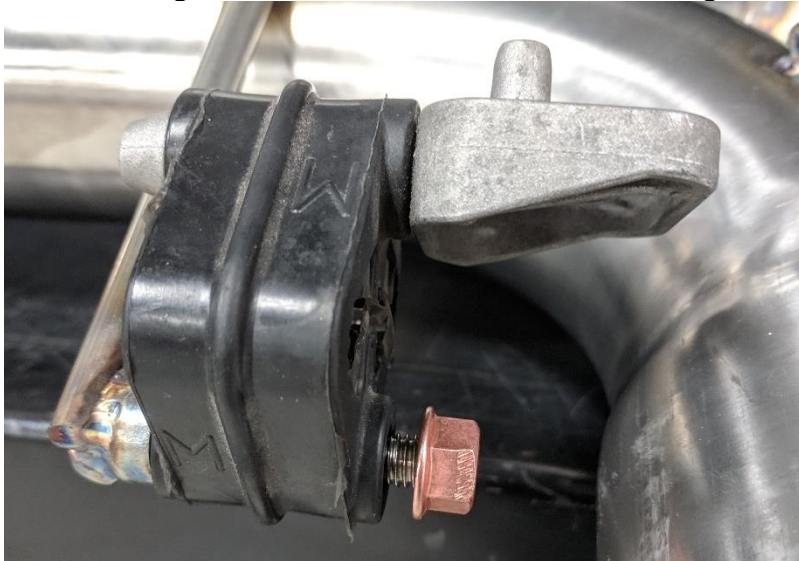
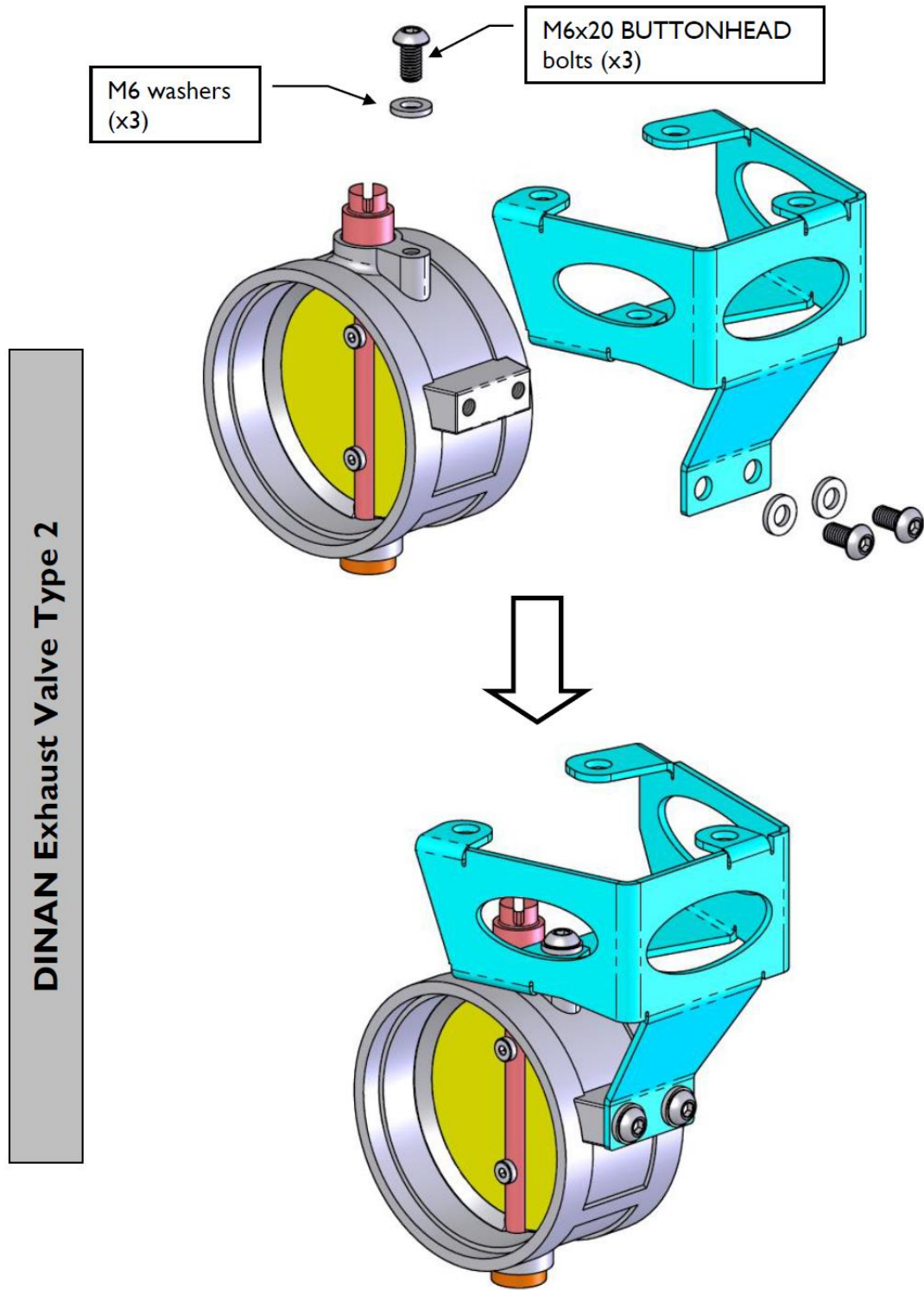
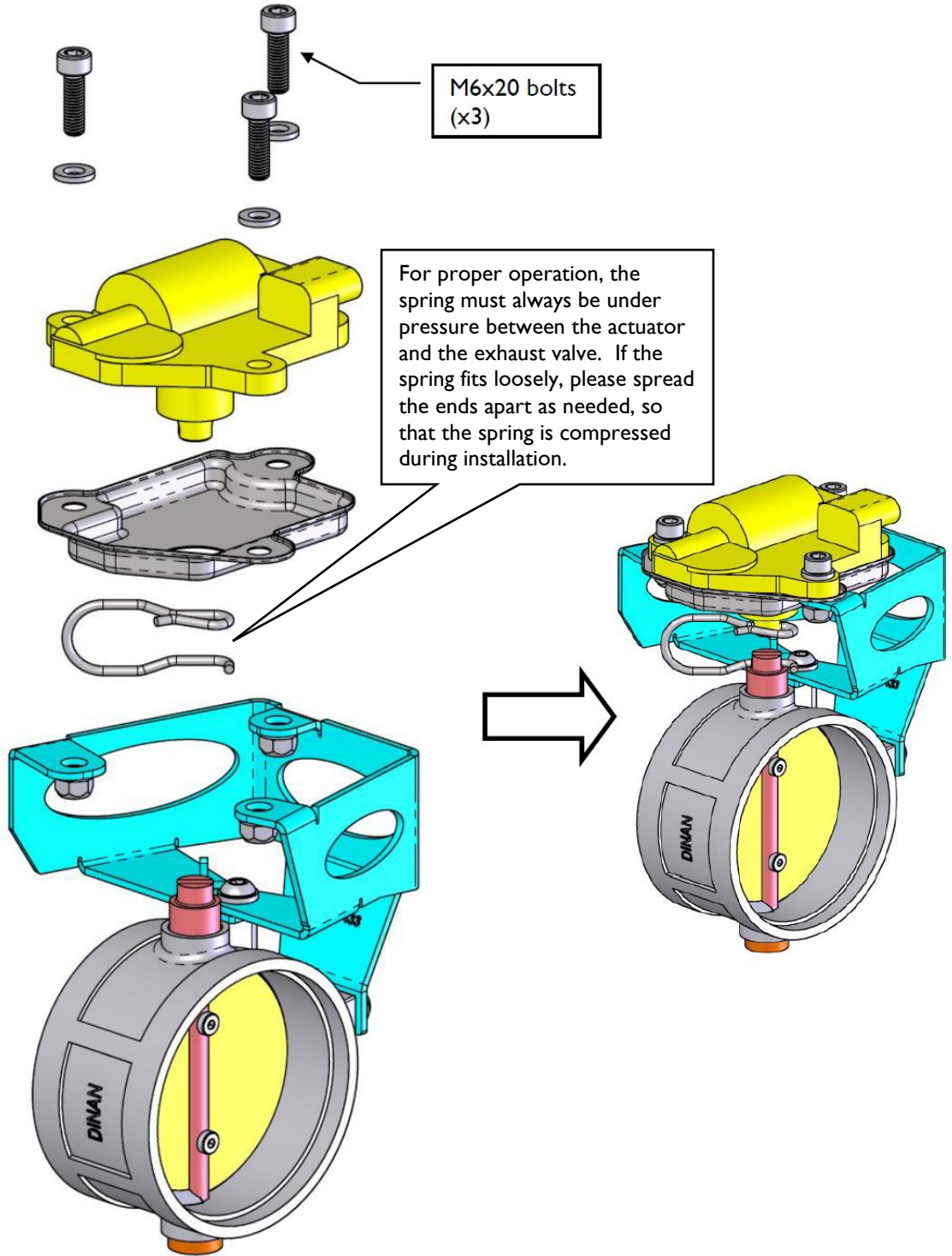


Figure 6

2. Following the drawings below, attach the actuators, brackets, and springs to the Dinan exhaust valves using the hardware provided.



DINAN Exhaust Valve Type 2



- Slide the provided clamps onto the exhaust of the car with the nuts facing the outside of the car as shown.

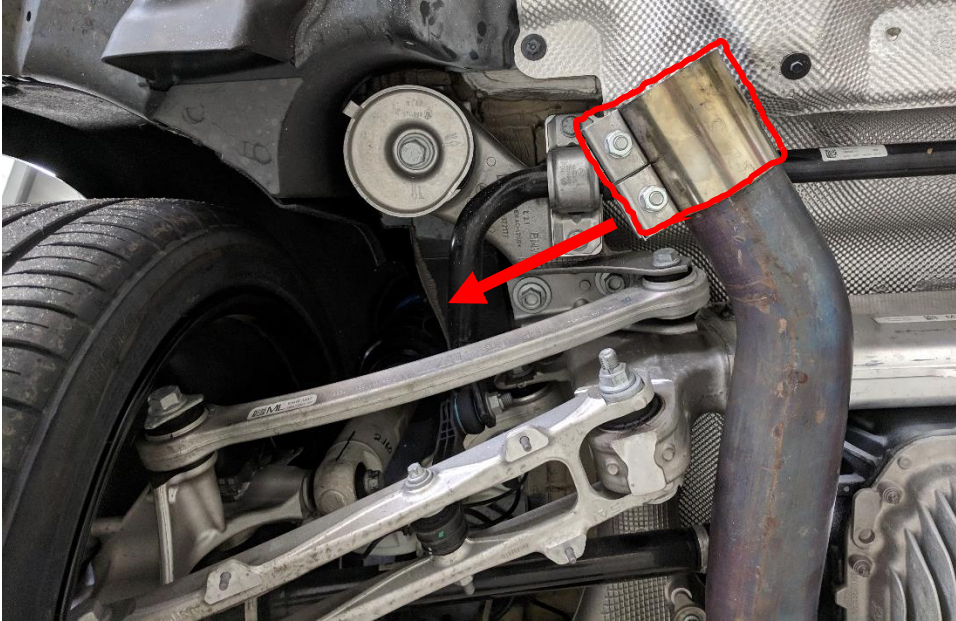


Figure 7

- Attach the Dinan Exhaust to the car, push the exhaust towards the front of the car and snugly the clamps, but allowing for movement. See Figure 8.

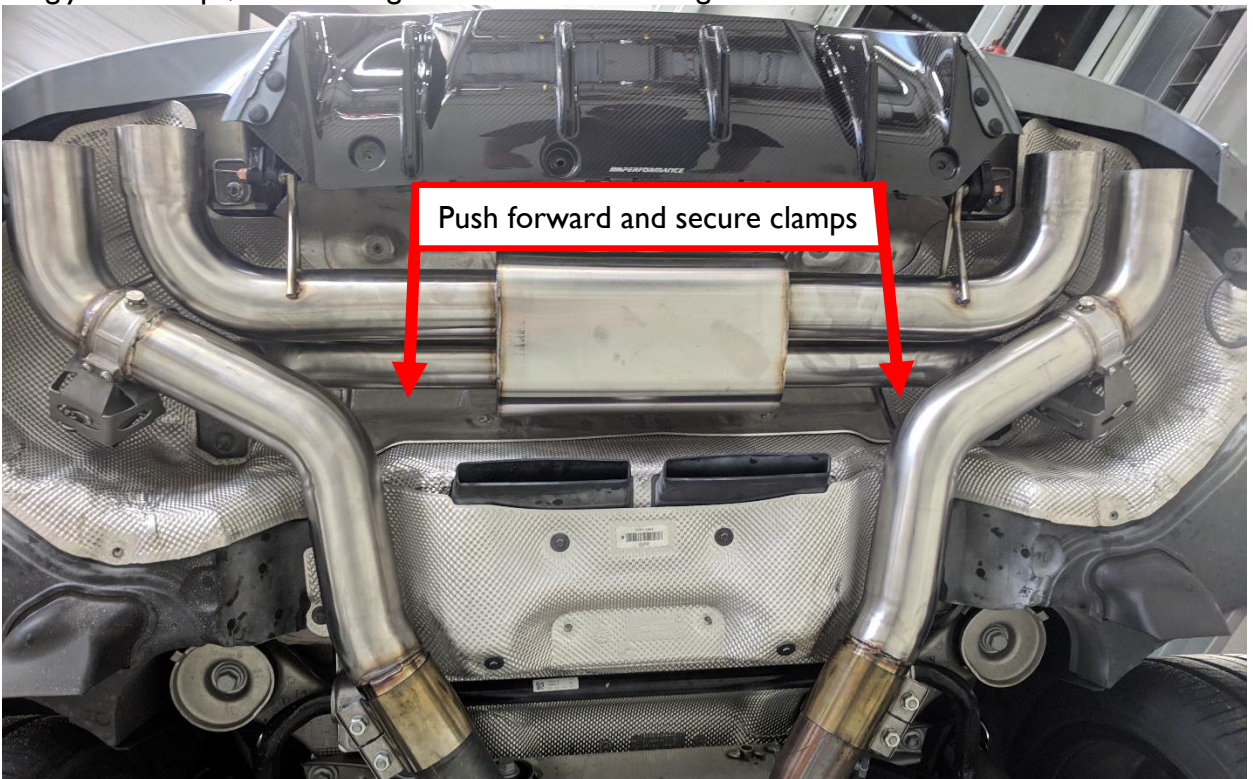


Figure 8

5. Verify that the fitment is correct and symmetrical, then reconnect the valve actuators. The harness has a small clip that must be disconnected from the car's body to allow for the extra reach.



Figure 9

6. With the exhaust secured in the car, attach the inside tips and clamps first. The clamp should be facing nearly straight up, without making contact with the firewall, as shown below.



Figure 10

- 6.1. The tip should be flush with the rear bumper as pictured below in Figure 11.



Figure 11

6.2. After adjusting the tip length and alignment with the bumper, make sure the second vertical line of the N in the Dinan logo is facing straight up. See Figure 12.



Figure 12

7. Tighten the tip clamp with a 15 mm wrench. Repeat the process for the other inside tip.

8. Insert outside tip & clamp. The clamp should be facing straight up. It can be tightened with a short 15mm socket wrench. **Before tightening**, adjust the tips according to steps 6 and 9.

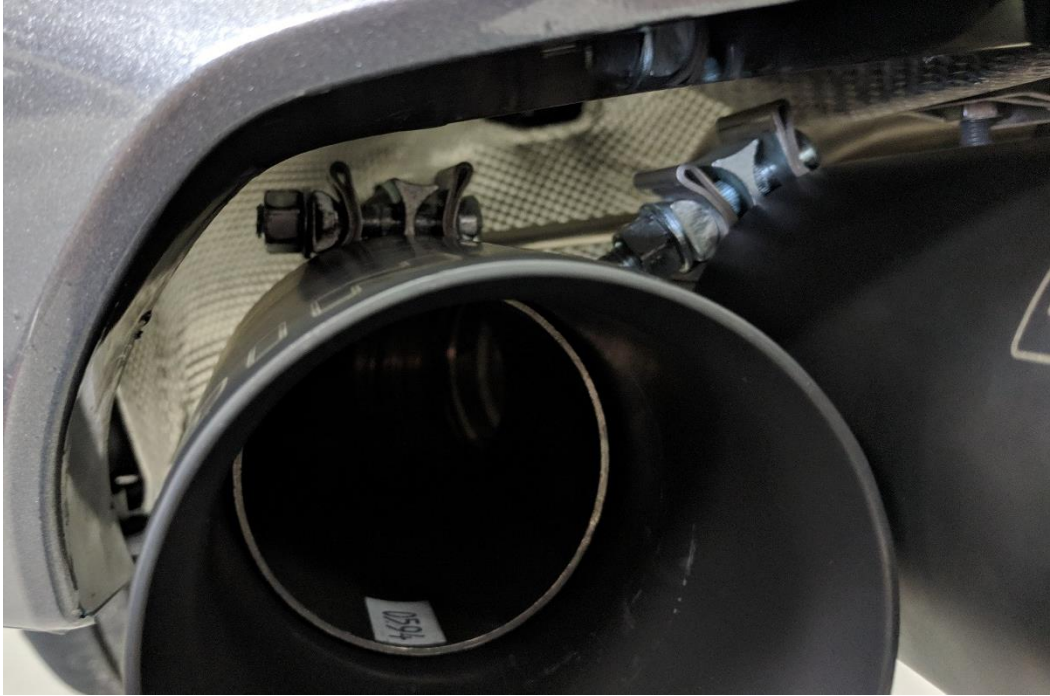


Figure 13

9. The outside tips should be offset one inch from the inside tips. See Figure 14.

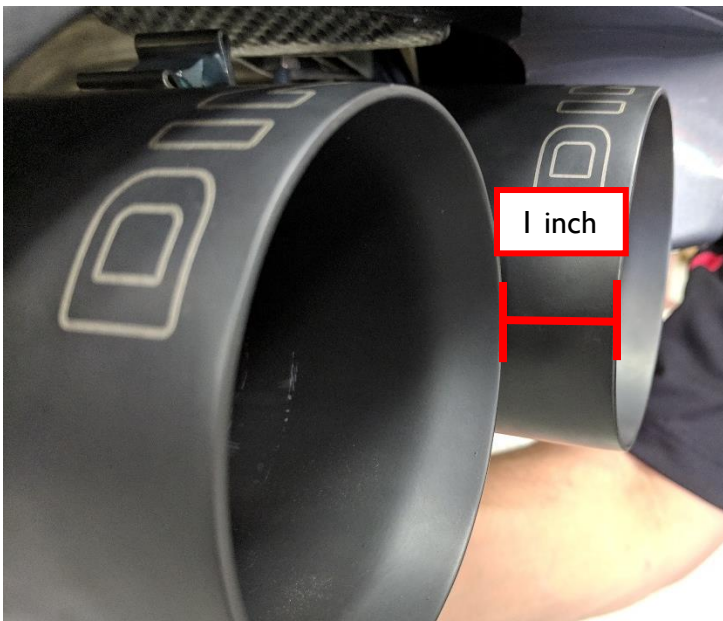


Figure 14

10. Repeat for other outside tip.

11. Once satisfied with the fitment, tighten the all of the clamps. The exhaust should resemble Figure 15 below.



Figure 15

12. Reinstall the exhaust shield. The car should resemble this underneath.

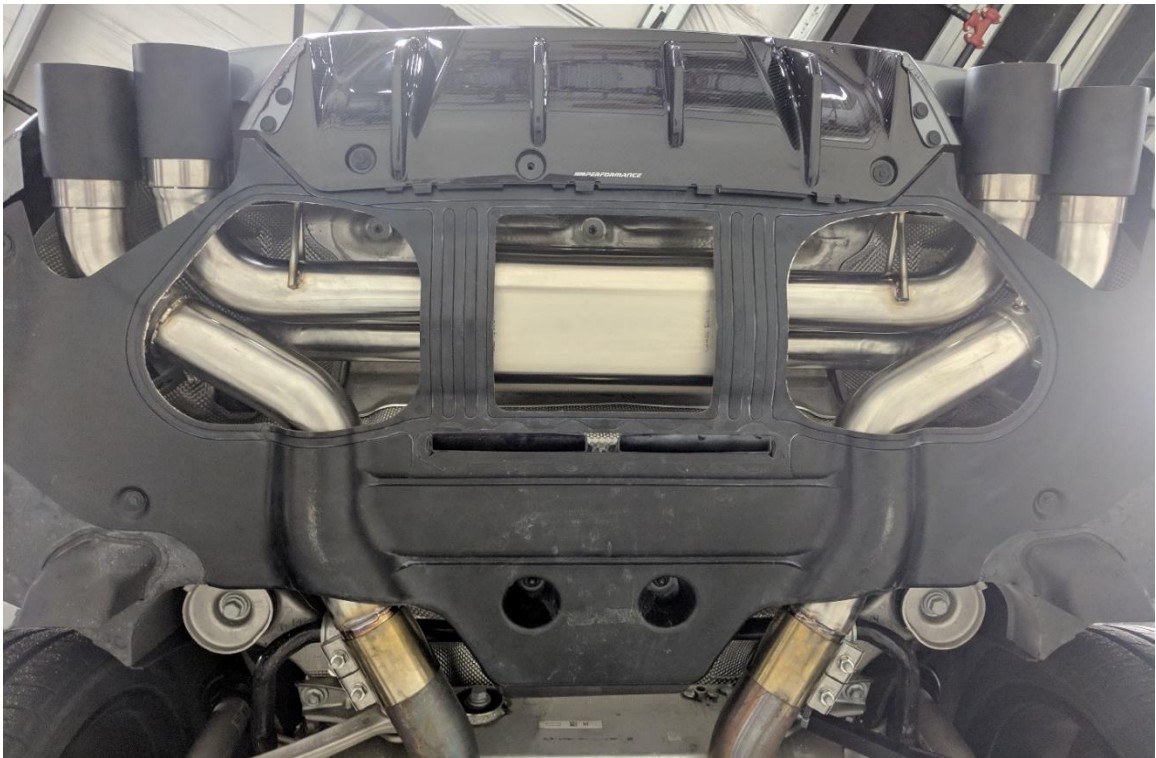


Figure 16

13. Installation is now complete.

PARTS LIST

Qty	Part #	Description
1	D663-0346	HARDWARE KIT F90 M5
	Contains:	
2	11 62 1 711 954	8mm Copper Nut
2	18 30 7 620 323	Fixing Bow
2	D662-0433	Valve Mount
2	D662-9245	80mm Exhaust Clamp
4	D662-9247	80mm Clamp
6	D671-0189	M6 Locknut
6	D671-0193	Socket Head M6
6	D671-0377	Button Head M6
18		M6 Flat Washer
6		M6 Wave Washer
