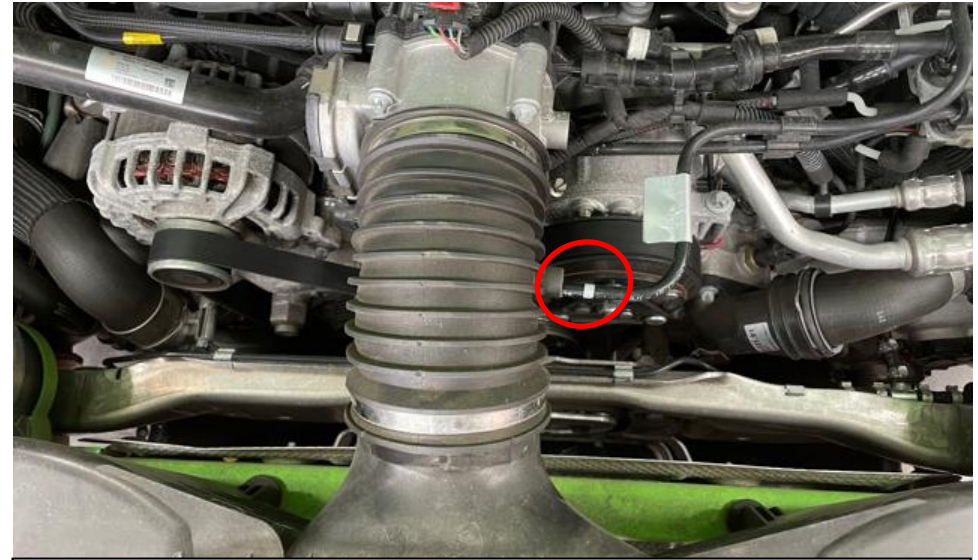


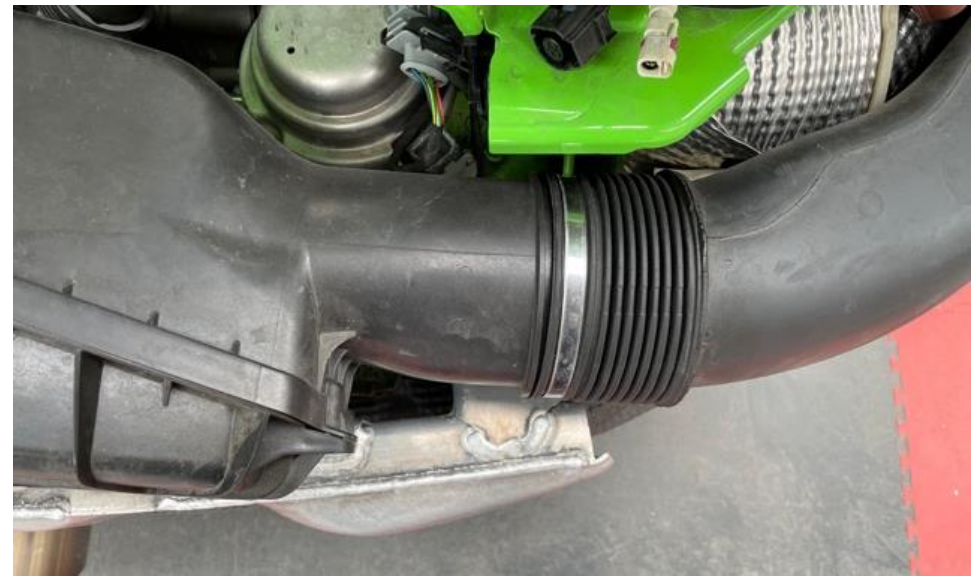
1. We will start by removing the stock airbox. To get to the airbox your rear bumper must be removed. We recommend that this is done by a trained professional. Once the rear bumper and ancillaries have been removed, this guide may be followed for the installation of the intake system.



2. Remove the small breather tube from the main intake tube. Also Loosen and remove the main tube from the throttle body.



3. The airbox is secured by 2 x M6 screws from underneath. Remove both screws.



4. Now loosen the clamps holding the airbox in the side ducts. Loosen both sides.



5. The airbox can now be removed from the engine bay.



6. Install the supplied silicon coupler to the throttle body as shown. One side is larger which is for the intake itself. The breather input should be facing the breather tube side as shown.



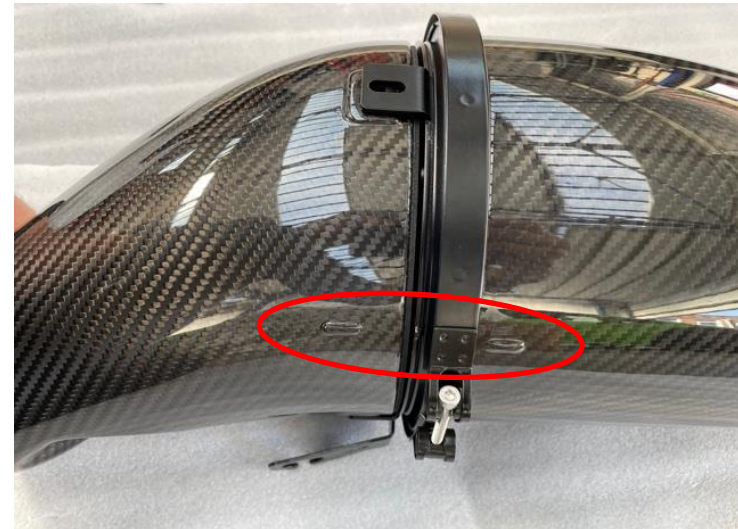
7. Ensure that the inside of the silicon is flush to the throttle body. There should be no exposed wall thickness of the throttle body.



8. Secure the silicon to the throttle body and also secure the breather tube. Note – Logo position may vary on the silicon.



9. Identify the left and right side ducts as shown. The top of the intake has the relief in the middle.



10. Secure the right side duct to the filter housing using the supplied screws, nuts and lock washers. There is a marking on the carbon duct and housing which need to line up. See next step.



11. Once the duct is secure, it can be rotated with the bracket to line up the markings in the carbon if required. Loosen the main clamp around the filter to allow rotation. Tighten the clamp once aligned.



12. Repeat for the left side.



13. Remove the mounting bushes from each side of the airbox.



14. Insert the bushes into the new brackets of the intake.



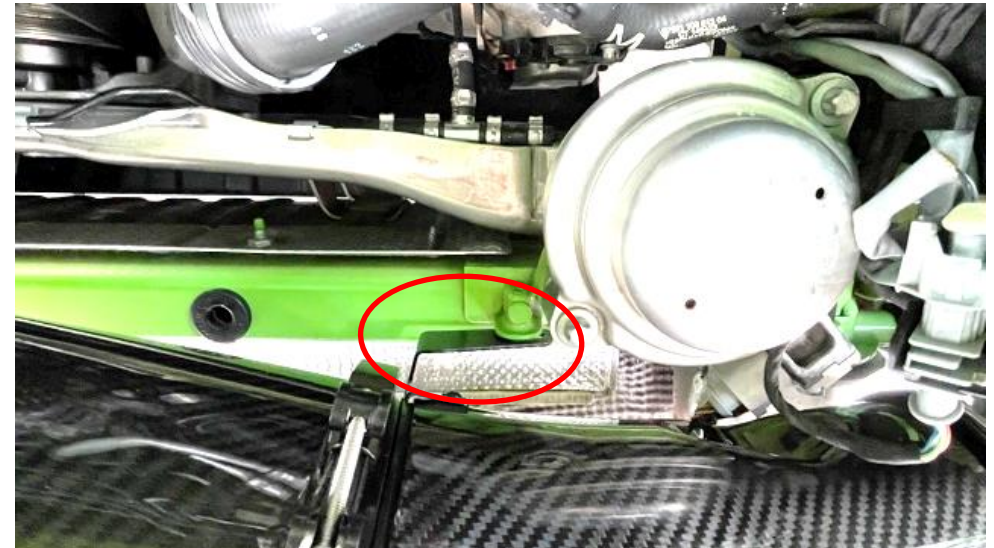
15. Now take the intake and push the right side into the right inlet duct – (right duct is on your right as you look at the engine from behind the car)



16. Push the intake into the silicon as you rotate it into the engine bay.



17. Here is the Right side in place. Notice the tab on the base is again in front of the tab on the chassis and the rear panel on the shield is under the stock duct.



18. Intake brackets should line up with the airbox mounts on the chassis. If they don't the bracket can be rotated by loosening the main clamp around the filter.



19. Tighten the clamp around the intake – make sure the intake is fully inside the silicon. Don't overtighten – the carbon can be damaged if overtightened.



20. Secure the clamps around each duct. Don't overtighten.



You have now completed the installation of the Eventuri 911 GT3 RTS intake system.

Eventuri cannot take responsibility for an incorrectly installed intake or any damage caused during installation.

21. Finally – secure the airbox by using the OEM screws through each mounting point.

