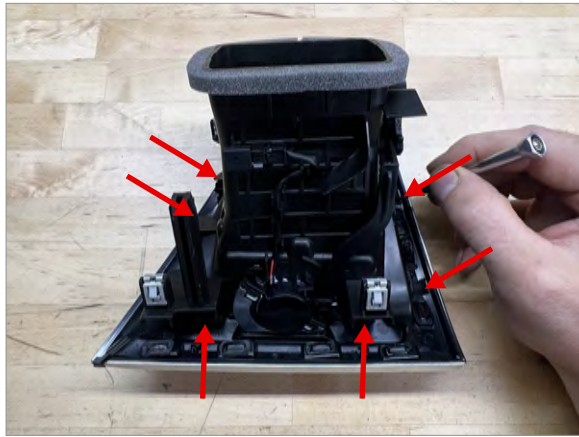


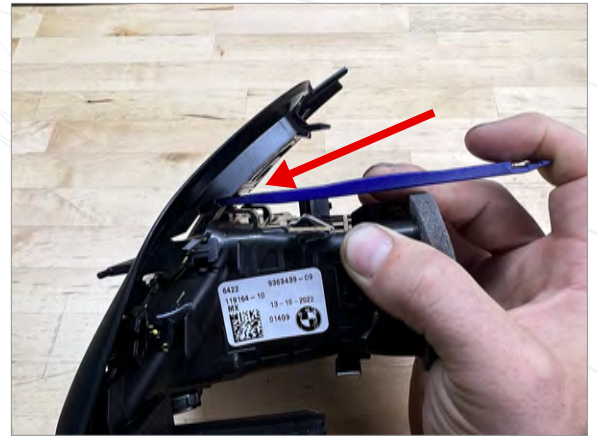


For additional install information please visit www.p3gauges.com/install

G01/G02/F97 Install Guide



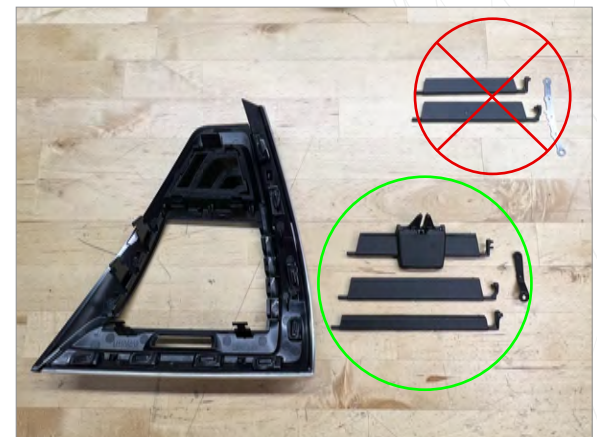
1 Release 6 clips on sides and bottom of vent



2 Release remaining 2 clips on top of vent by pushing trim tool between top of clip and vent trim

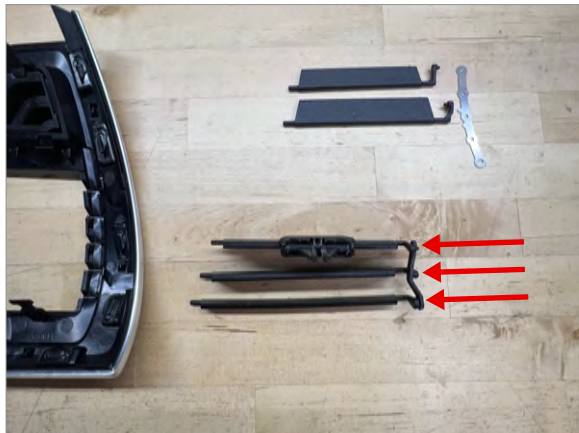


3 Remove trim from housing and lay parts out as shown



4 Retain bottom 3 slats for reassembly. Top 2 slats and metal bar will not be reused.

WARRANTY & LIABILITY: Neither P3 Cars, nor its dealers or agents shall be liable in any way, for any damage, loss, injury or other claims, resulting from the installation or use of this product. By purchasing or installing this product, you assume all liability of any kind connected with the use and/or application of this product. If you are unsure that you can safely install and use this product, consult a qualified installer or mechanic. The warranty on this product covers only the product itself for a period of 6 months from the date of purchase, and it will be at our discretion to repair or replace the affected parts. No user serviceable parts inside. Warranty will be voided if product shows physical damage.



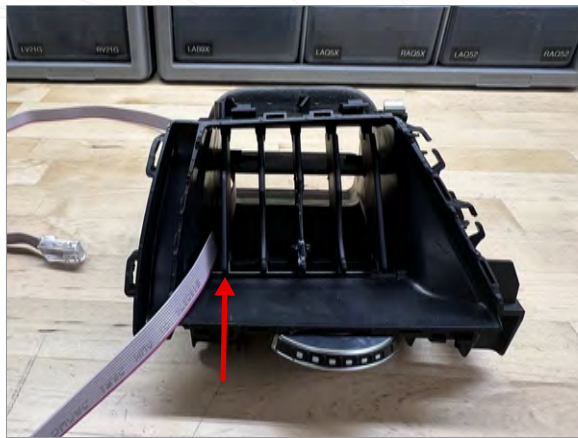
5a Install bottom 3 slats into provided slat retainer (Be sure they are in correct order as shown in step 4)



5b Assembly should look like this (use back peg on top slat)



For additional install information please visit www.p3gauges.com/install



6 Feed cable through vent against left side of housing.
*OPTIONAL - Left vertical slat can be removed for extra cable clearance



7 Place trim on box for assembly process

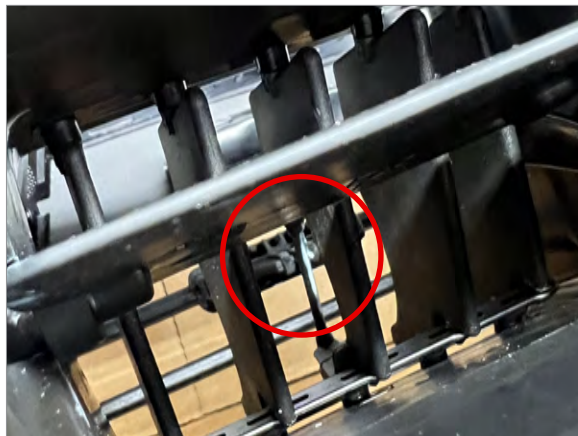


8 While keeping display cable in vent housing as shown, lay slat assembly and display into trim (Be sure all pegs are aligned correctly)



9a Slide vent housing down onto trim assembly, partially inserting bottom 2 clips (But do not fully seat yet)

WARRANTY & LIABILITY: Neither P3 Cars, nor its dealers or agents shall be liable in any way, for any damage, loss, injury or other claims, resulting from the installation or use of this product. By purchasing or installing this product, you assume all liability of any kind connected with the use and/or application of this product. If you are unsure that you can safely install and use this product, consult a qualified installer or mechanic. The warranty on this product covers only the product itself for a period of 6 months from the date of purchase, and it will be at our discretion to repair or replace the affected parts. No user serviceable parts inside. Warranty will be voided if product shows physical damage.



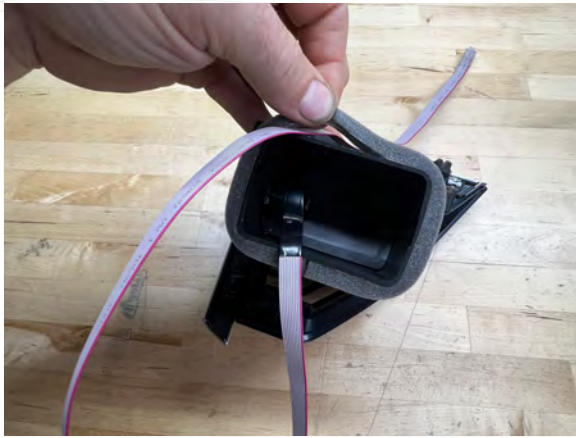
9b Be sure middle slat aligns with fork to retain horizontal control



9c Finish snapping trim and housing together, fully seating all 8 clips around the vent trim



For additional install information please visit www.p3gauges.com/install



10 Gently pull foam away from vent housing enough to feed display cable through



11 Tightly fold display cable around back of housing and pinch foam back into place



Ready to Install Into Vehicle

WARRANTY & LIABILITY:
Neither P3 Cars, nor its dealers or agents shall be liable in any way, for any damage, loss, injury or other claims, resulting from the installation or use of this product. By purchasing or installing this product, you assume all liability of any kind connected with the use and/or application of this product. If you are unsure that you can safely install and use this product, consult a qualified installer or mechanic. The warranty on this product covers only the product itself for a period of 6 months from the date of purchase, and it will be at our discretion to repair or replace the affected parts. No user serviceable parts inside. Warranty will be voided if product shows physical damage.