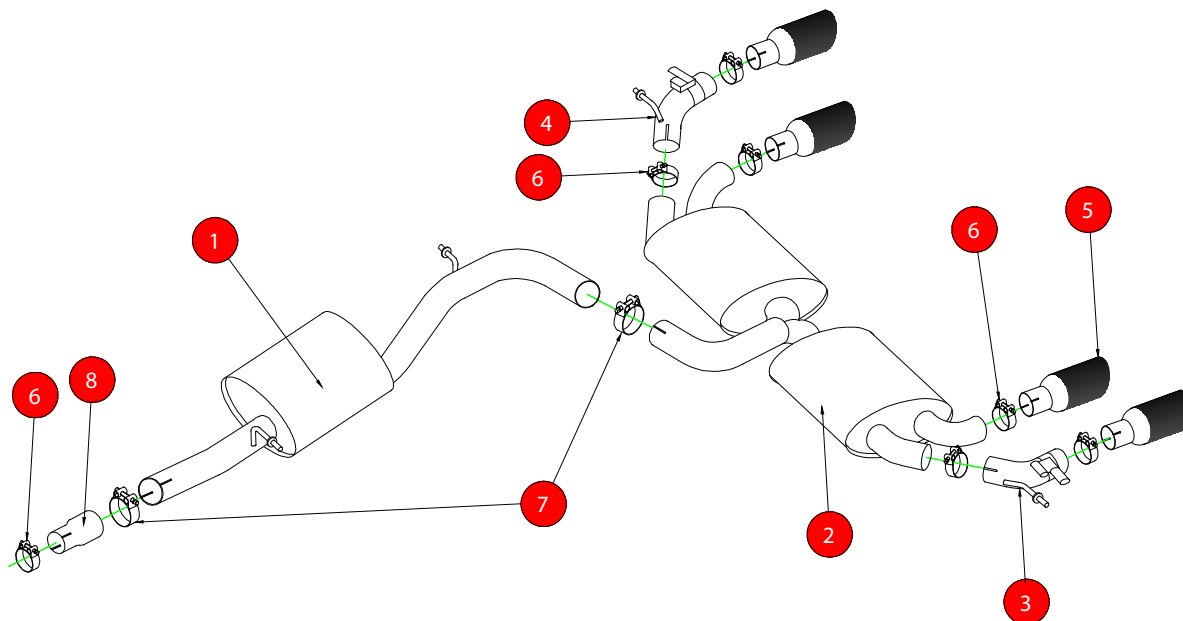


Case 10 Fitting time: 2 Hours

CAR	Audi S3 2.0T Quattro 3Door/Sportback 8V	PART NO.	SAU049DC
YEAR	2013- Current	FIT KITS	198 FK
NOTES	Where not supplied use original fittings.	FEATURES	Pipe Diameter:- 76mm/3"



NO.	PART NO.	DESCRIPTION	QTY
1	547AU	Centre Silencer	1
2	605AU	Rear Silencer	1
3	608AU	L/H Exit Link Pipe with Red Power Valve	1
4	609AU	R/H Exit Link Pipe with Red Power Valve	1
5	Z023.10056	Trim	4
Fit Kit			
6	Z016.10064	65mm H/D Clamp	7
7	Z016.10062	79mm H/D Clamp	2
8	AD62	Adaptor	1

E-MARK	e24 032738
DATE	01/06/2018
ISSUE	06
AUTHORISED	Shaun J.

Fitting Instruction Overleaf:

NOTE: ENSURE SCORPION SYSTEM IS CLEAR OF MOVING PARTS AND ALL ORIGINAL FUNCTIONS WORK CORRECTLY.

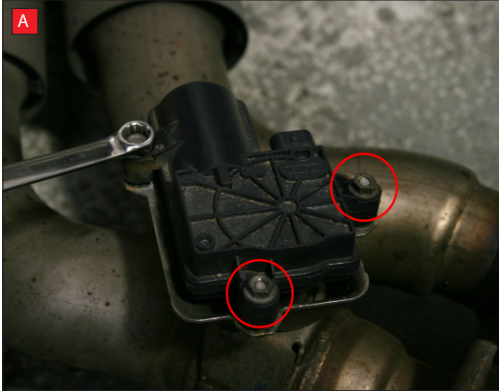
Checked By \_\_\_\_\_



Case 10

BIKE	Audi S3 2.0T Quattro 3Door/Sportback 8V	PART NO.	SAU049DC
YEAR	2013-on	FIT KITS	198FK
NOTES	Where not supplied use original fittings.	FEATURES	Pipe Diameter:- 76mm/3"

CONTINUED FROM OVERLEAF:



A) After you have removed O.E exhaust you will need to remove the two rear valve motors (Right hand side and left hand side). remove 6 x 8mm nuts from both sides (3 on each valve, keep safe as you will need them to bolt the electronic valve motors to Scorpion Exhaust).

B) Lift up the motor. You will now be able to see the torsion spring (This must stay on the electronic valve motor to work with Scorpion Exhaust **DO NOT REMOVE SPRING AND DO NOT TURN MOTOR**)



C) Rotate Scorpion valve so its in the same position and the O.E electronic valve motor)

D) Once happy spring and Scorpion valve position are in line now fit the O.E electronic valve motor.

E) Using the 3 x 8mm O.E nuts secure in place. Once this is done now repete on the other side.



F) When fitting the Scorpion rear silencer (605AU) the rear most mounting bracket's need to be rotated through 180 degrees to allow correct fitment. This needs to be done on both sides of the car.

Once happy with fitment fully tighten up all clamps and fixing and plug in the two electronic valve motors.