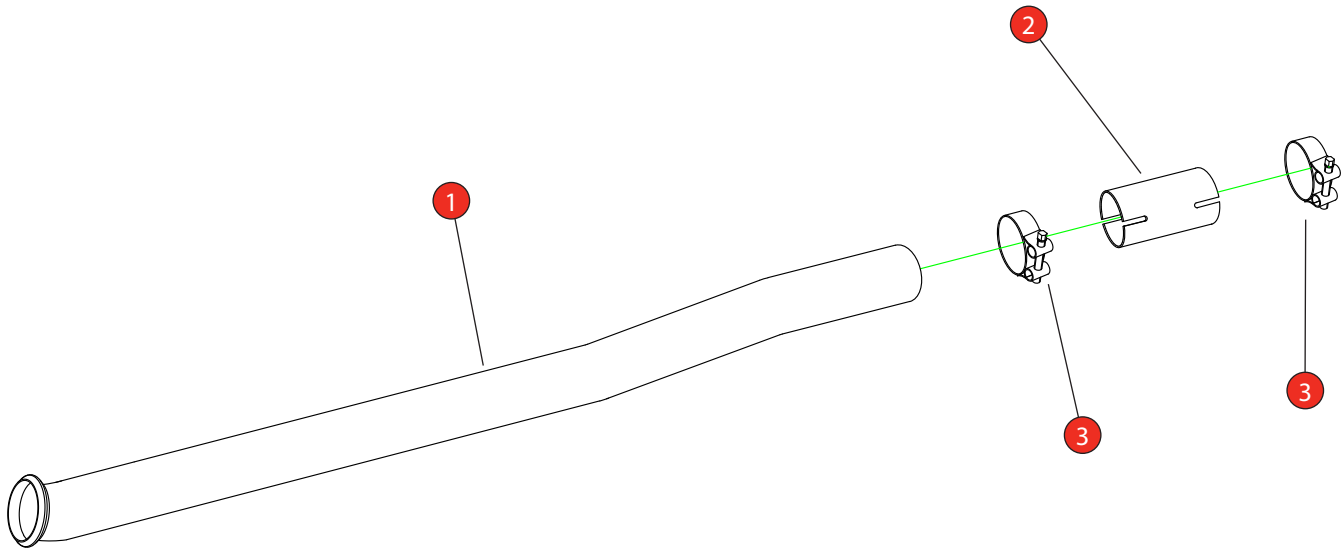


<b>Car</b>	BMW F70 M135i	<b>Part No.</b>	SBMP117
<b>Year</b>	2024-Current	<b>Fit Kits</b>	537FK
<b>Notes</b>	Where not supplied use original fittings. Original system requires cutting	<b>Features</b>	Pipe Diameter:- 70mm

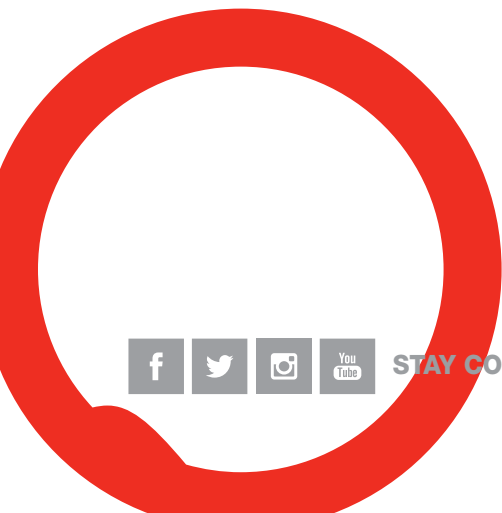
Estimated Fitting Time: 1 Hours



NO.	PART NO.	DESCRIPTION	QTY
1	1027BM	GPF Delete Pipe	1
<b>Fit Kit</b>			
2	AD79	Adaptor	1
3	Z016.10055	68-73mm Clamp	2

CLASSIFICATION	Motorsport Use Only
HOMOLOGATED	No
DATE	15/01/2026
ISSUE	00
AUTHORISED	G O'Shea

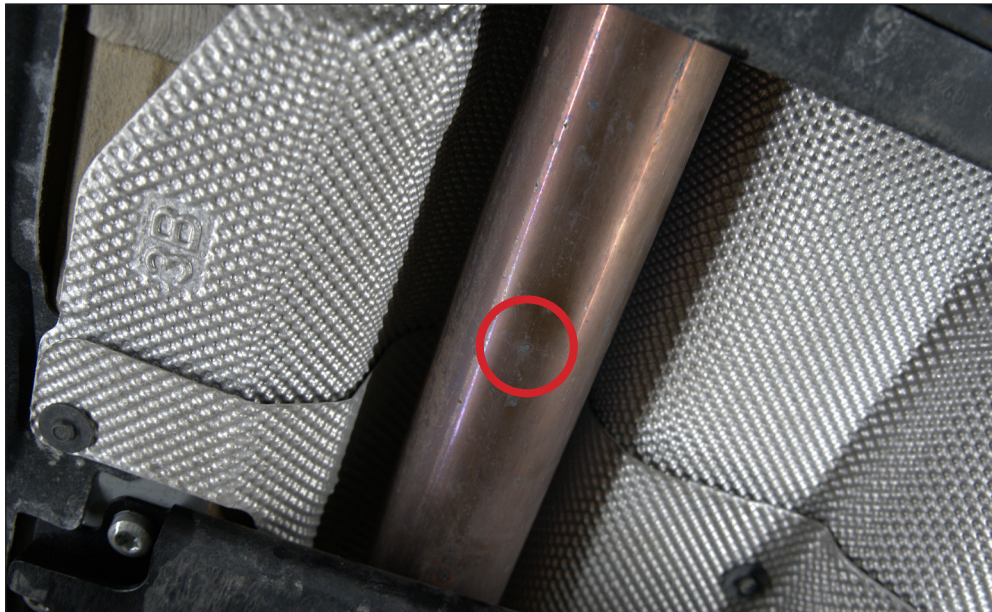
**NOTE:** ENSURE SCORPION SYSTEM IS CLEAR OF MOVING PARTS AND ALL ORIGINAL FUNCTIONS WORK CORRECTLY.



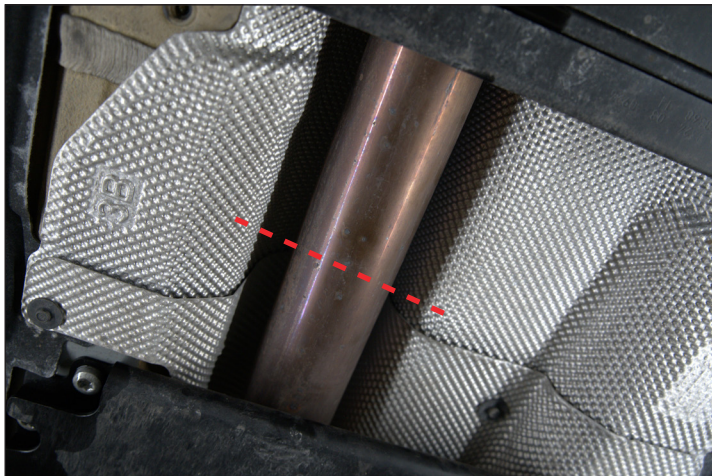
STAY CONNECTED TO RED POWER.

<b>Car</b>	BMW F70 M135i	<b>Part No.</b>	SBMP117
<b>Year</b>	2024-Current	<b>Fit Kits</b>	537FK
<b>Notes</b>	Where not supplied use original fittings. Original system requires cutting	<b>Features</b>	Pipe Diameter:- 70mm

Estimated Fitting Time: 1 Hours

**Cutting Instructions:**

The original system requires cutting between the 2 tunnel braces. There are 3 dimples on the pipe, cut at the middle one and clean up the edges.



STAY CONNECTED TO RED POWER.